

# Instructions for Downloading/Installing the Xilinx ISE Webpack Software

B. Ackland  
January 2015

## Downloading and Installing Xilinx WebPack:

1. The links to Xilinx information change from time to time. Go to:  
[www.xilinx.com/support/download/index.htm](http://www.xilinx.com/support/download/index.htm) .

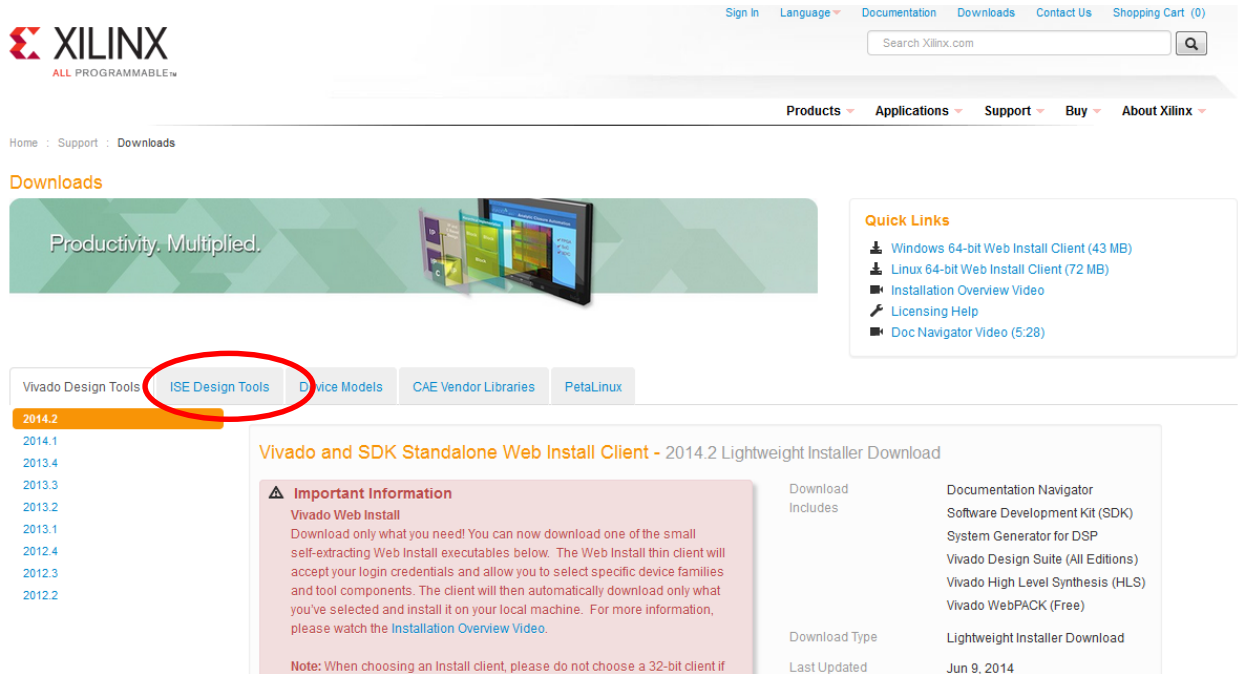


Figure 1(a)

2. The screen shot (Figure 1(a)) shows the current page for downloading the Xilinx design software. Click on ISE Design Tools. This will bring up the ISE Tools page shown in Figure 1(b).
3. Use the link to version 13.1 on the left side of the page to bring up the 13.1 ISE Design Suite links and then select the Full Installer for Windows for Version 13.1 for your operating system. (*Version 13.1 is a smaller download than the latest version 14.7. It works for Windows 7 both 32 and 64 bit. If you are using Windows 8 or Windows 10, you should download the latest version. Version 13.1 will not work with Windows 8 or 10*). The rest of this document assumes you are downloading to a PC. Xilinx will ask you to sign in as shown in Figure 2.

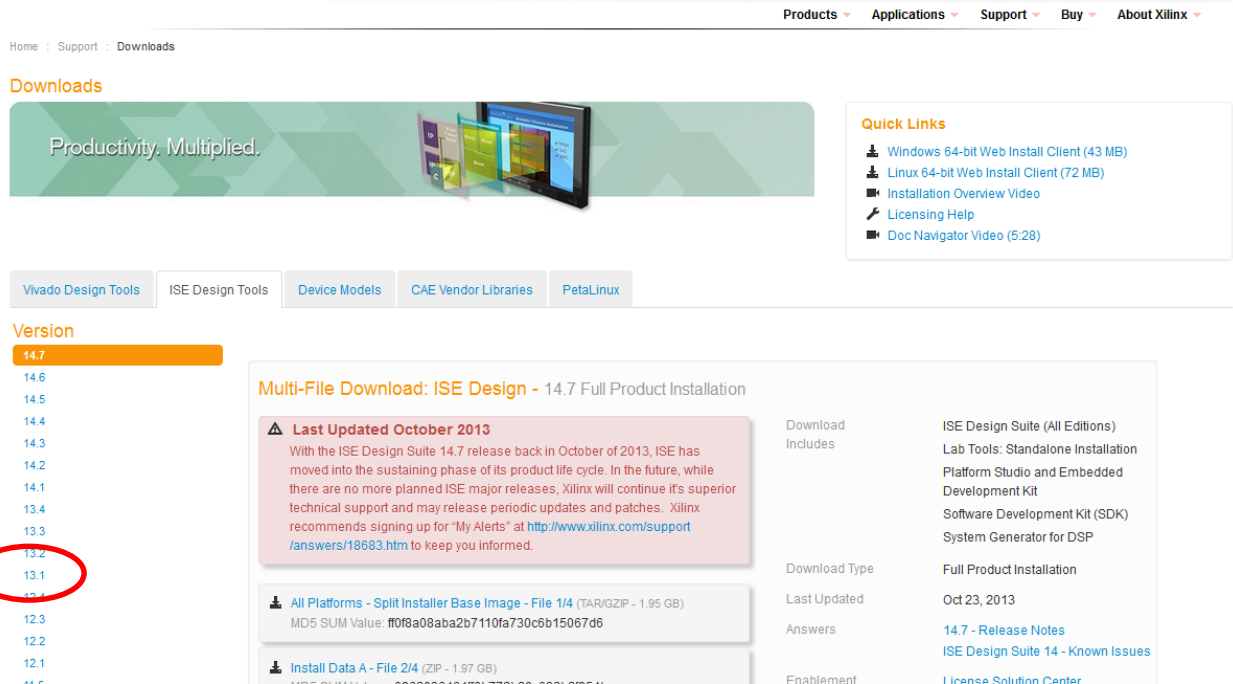


Figure 1(b)

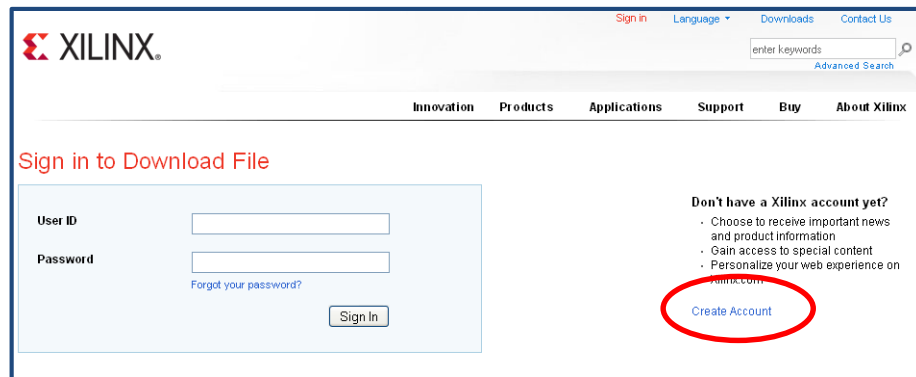


Figure 2

4. Click *create account* and select a user ID and password. Click *create account* again and Xilinx will send you an email to verify your email address. Click the link supplied in the email and it will take you to a webpage where you will be asked to login using the ID and password you just chose. Xilinx will then ask for more information as shown in Figure 3. Fill in the form and click *Next*.

**XILINX.** My Account | Sign Out | Language \* | Downloads | Contact Us  
 enter keywords

Innovation | Products | Applications | Support | Buy | About Xilinx

**Download Center**

US export regulations require that your First Name, Last Name, Company Name and Shipping Address be verified before Xilinx can fulfill your request. Please provide accurate and complete information for immediate processing. Sorry, addresses with Post Office Boxes and names/addresses with Non-Roman Characters with accents such as grave, tilde or colon are not supported by US export compliance systems.  
 Fields marked with an asterisk \* are required.

First Name \*

Last Name \*

Corporate Email

[Update profile](#)

Department \*

Address 1 \*

Address 2

City \*

State/Province \*

Postal/Zip Code \*

Country \*

Phone (include area code) \*

Fax (include area code)

Company/Organization \*

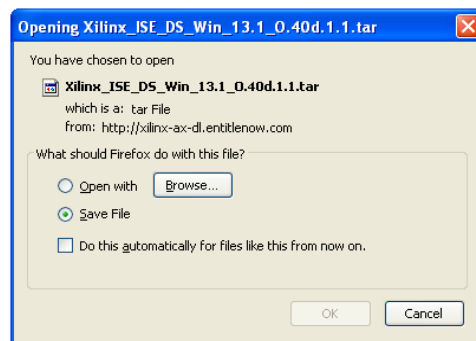
**Figure 3**

- Now that you have an account set up, Xilinx takes you back to the download process and invites you to download a **.tar** file which will be used to setup the software (Figure 4). Select *Save File* and click *OK*.

**About the Download Manager**

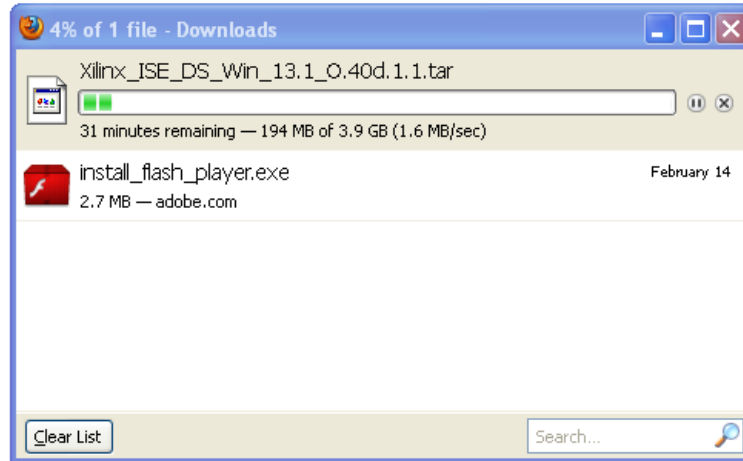
The Download Manager helps ensure that your Xilinx product download is successful. If your internet connection is temporarily lost or your computer is restarted, the Download Manager is able to continue the download process where it left off.

You are being presented with a browser security warning regarding the installation of this Download Manager. By accepting the Akamai Technologies Inc. security certificate, the Download Manager will install and begin to download the requested file.



**Figure 4**

The download process (Figure 5) takes a long time as the download is over 3GB in size.



**Figure 5**

- A **.tar** file uses a compressed format (like a **.zip** file); **.tar** files are frequently used in Unix/Linux systems. Most PC's do not come with a utility for expanding **.tar** files. You can, however, download a free utility called **7-zip** from [www.7-zip.org](http://www.7-zip.org) (see Figure 6). Click on the appropriate download button.

**7-Zip**

7-Zip is a file archiver with a high compression ratio.

Download 7-Zip 9.20 (2010-11-18) for Windows:

Link	Type	Windows	Size
<a href="#">Download</a>	.exe	32-bit x86	1 MB
<a href="#">Download</a>	.msi	64-bit x64	1 MB

The download links above redirect you to download pages on SourceForge.net

**License**

7-Zip is **open source** software. Most of the source code is under the **GNU LGPL** license. The unRAR code is under a mixed license: GNU LGPL + unRAR restrictions. Check license information here: [7-Zip license](#).

You can use 7-Zip on any computer, including a computer in a commercial organization. You don't need to register or pay for 7-Zip.

**The main features of 7-Zip**

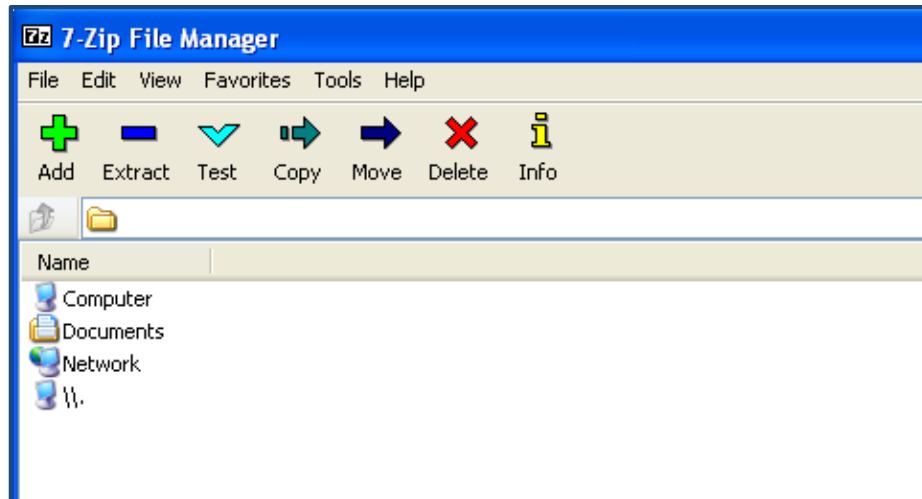
- High compression ratio in [7z format](#) with **LZMA** and **LZMA2** compression
- Supported formats:
  - Packing / unpacking: 7z, XZ, BZIP2, GZIP, TAR, ZIP and WIM
  - Unpacking only: ARJ, CAB, CHM, CPIO, CramFS, DEB, DMG, FAT, HFS, ISO, LZH, LZMA, MBR, MSI, NSIS, NTFS, RAR, RPM, SquashFS, UDF, VHD, WIM, XAR and Z.

**Figure 6**

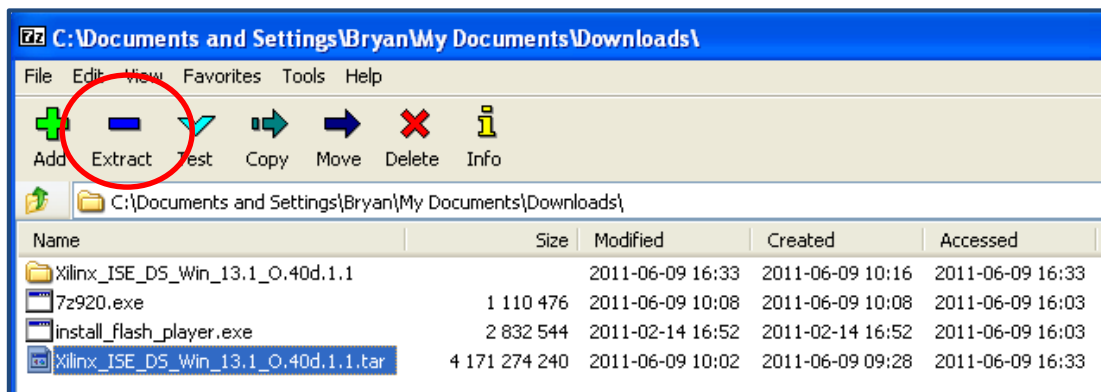
- Download and execute the installation file *7z920.exe*. Install into the default directory: *C:\Program File\7-Zip*. Run **7-zip** using:

*Start -> All Programs -> 7-Zip -> 7-Zip File Manager*

The **7-Zip** screen is shown in Figure 7. Use the icons in the manager window to navigate to the location of the downloaded **.tar** file (Figure 8). Select the **.tar** file and then click *Extract*.

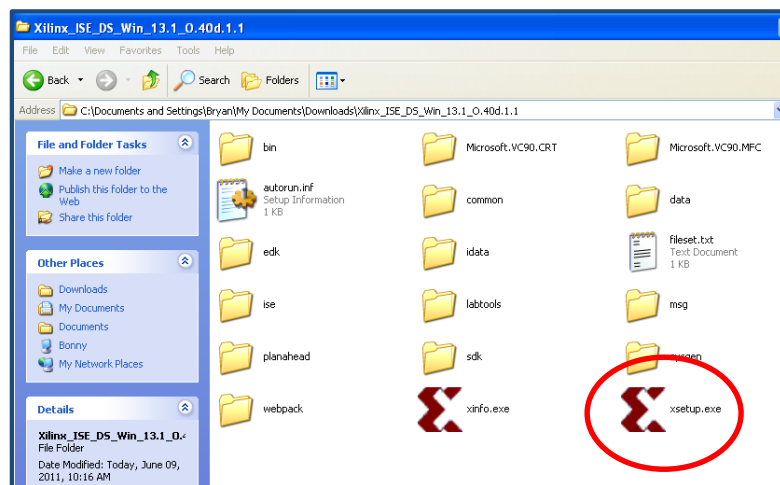


**Figure 7**



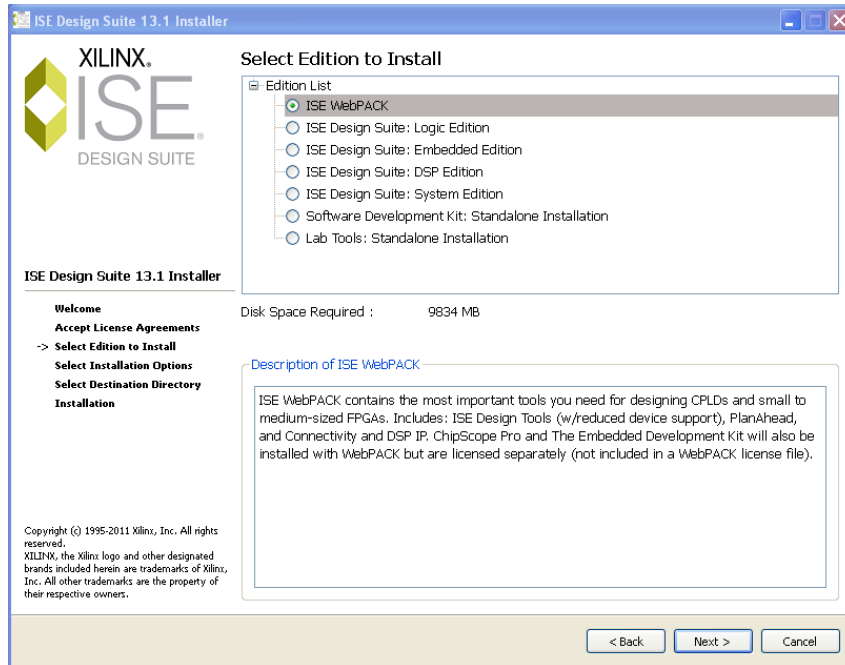
**Figure 8**

- The 7-Zip software will extract the Xilinx installation files into a folder of the same name (less the .tar extension) in your download directory. This will take quite some time. Once the extraction is complete open the Xilinx installation folder. It should appear as in Figure 9. Execute *xsetup.exe*.



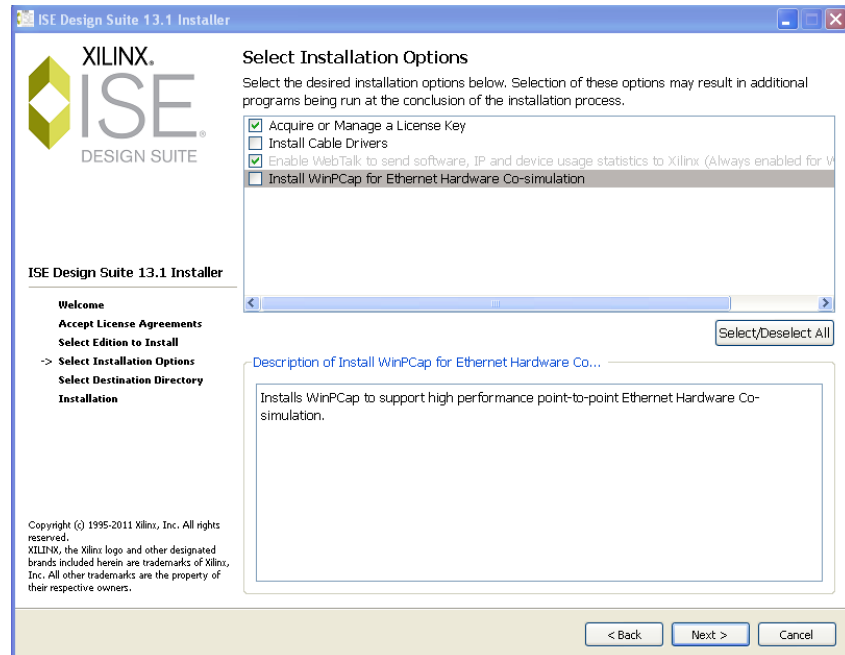
**Figure 9**

9. Follow the installation instructions and accept the license agreement (2 pages). You will then come to the software selection page (Figure 10). Select *ISE WebPACK* and then click *Next*.



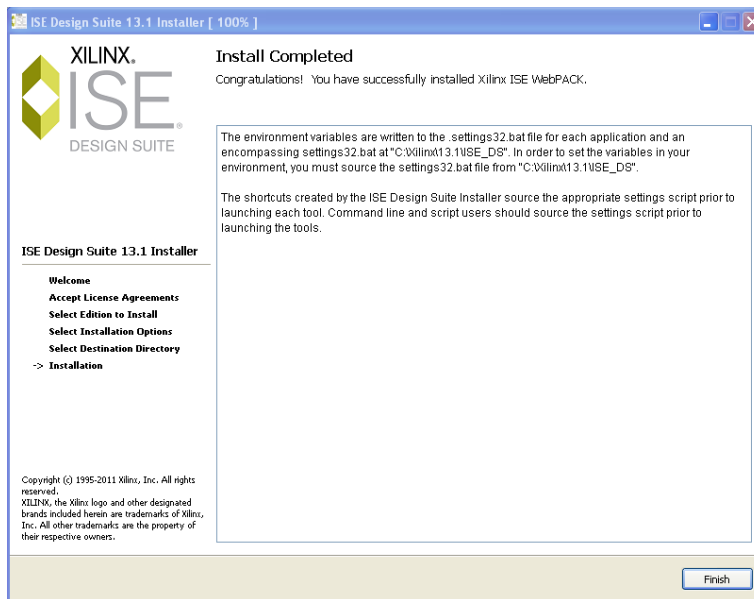
**Figure 10**

10. Next you will need to select some installation options. **Uncheck** *Install Cable Drivers* and *Install WinPcap* and then click *Next*.



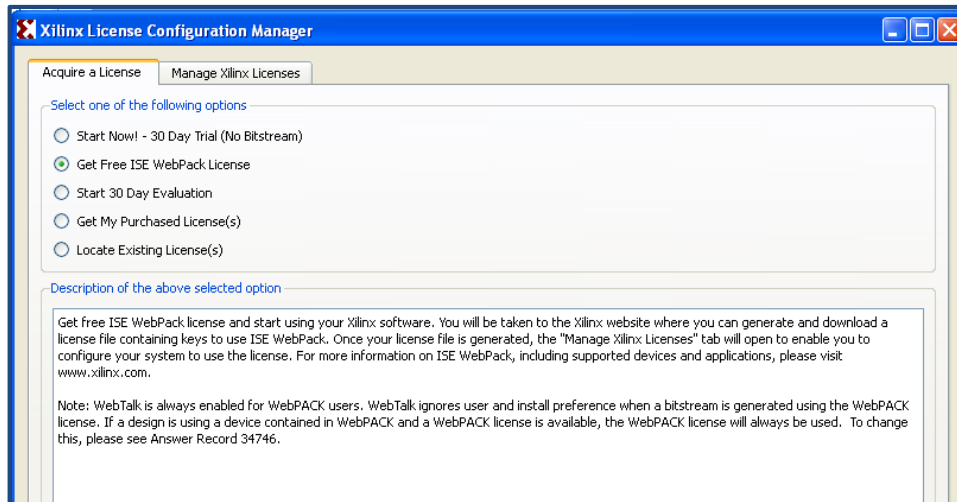
**Figure 11**

11. Proceed through the remaining pages of the installation process, using the default installation directory. The installation process also takes a long time. Finally, you will arrive at the Install Completed page! (see Figure 12)



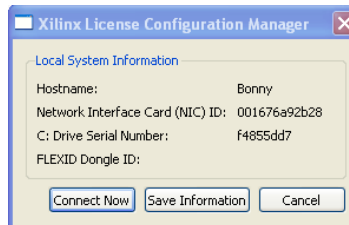
**Figure 12**

12. Just when you thought you were done, the License Configuration Manager pops up (Figure 13). Select *Get Free ISE WebPack License* and click *Next*.



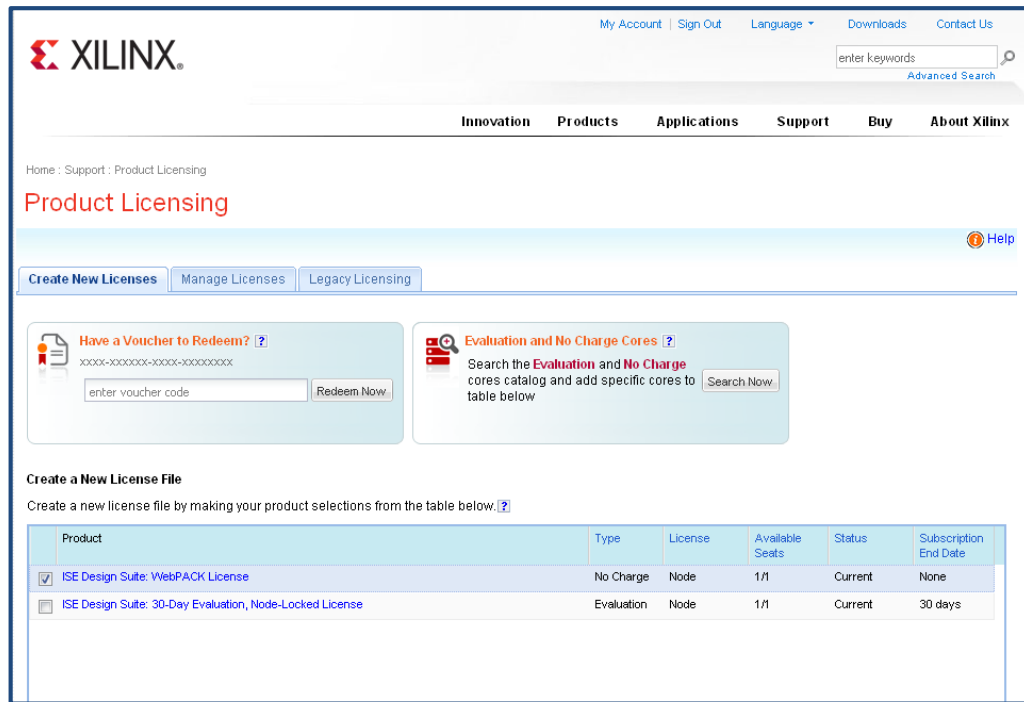
**Figure 13**

A small pop-up window (Figure 14) appears. Click *Connect Now*.



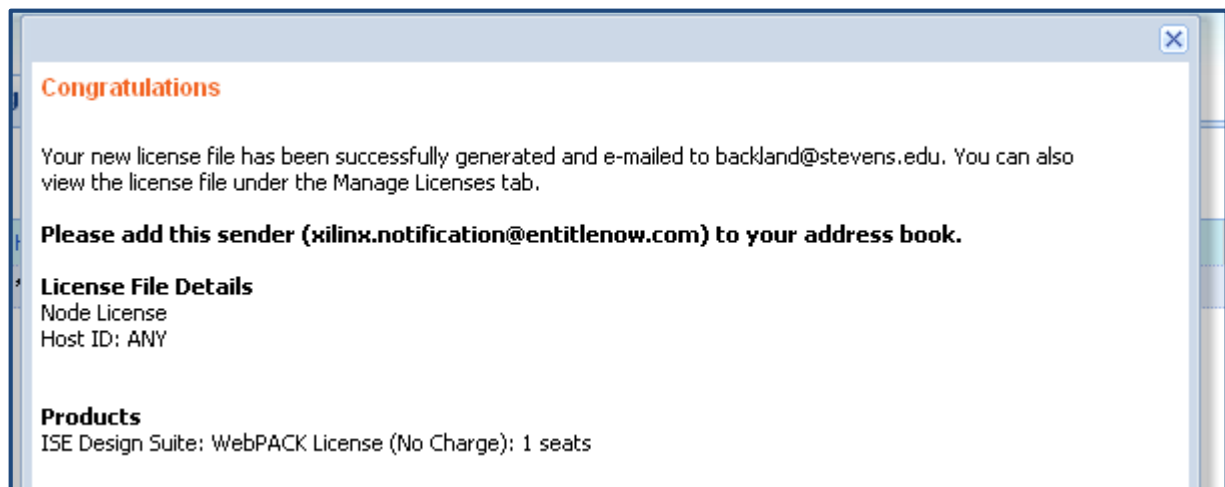
**Figure 14**

13. This loads a Xilinx webpage where you will once again be asked to login and confirm your personal details. The site will then take you to the Product Licensing web page (Figure 15). Select ISE Design Suite: WebPACK License and click *Next*.



**Figure 15**

14. This will lead you through two *Generate Node License* popup windows. You don't need to change anything in these windows – simply click *Next* on each. Finally you will arrive at a **Congratulations** window (Figure 16). This will inform you that an e mail has been sent to you with your new license file as an attachment.



**Figure 16**

Follow the instructions in the email for installing a Node-locked License. You made it – you're now ready to roll!