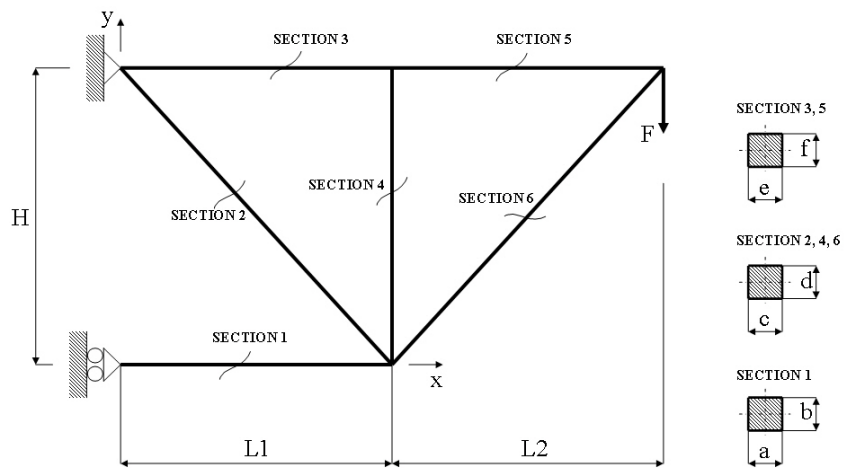


# Course in ANSYS

Example0151

## Example – Truss 2D



Example0151

2

# Example – Truss 2D

**Objective:**

Compute the maximum deflection

**Tasks:**

Display the deflection figure?

**Topics:**

Topics: Start of analysis, Element type, Real constants, Material, modeling, element size for beam models, saving/restoring

$$E = 210000\text{N/mm}^2$$

$$\nu = 0.3$$

$$L = 100\text{mm}$$

$$H = 120\text{mm}$$

$$a = b = 20\text{mm}$$

$$c = d = 10\text{mm}$$

$$e = f = 5\text{mm}$$

$$F = 1000\text{N}$$

Example0151

3

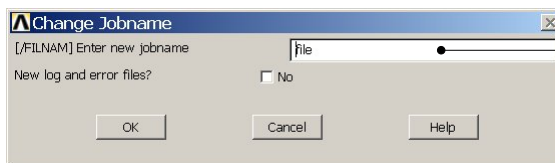
# Example - title

Utility Menu > File > Change Jobname

GUI

/jobname, Example0151

Command line entry

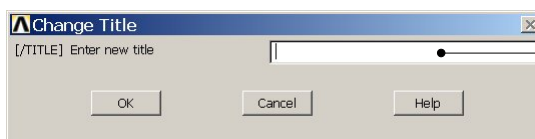


Enter: Example0151

Utility Menu > File > Change Title

Enter: Truss 2D

/title, Truss 2D



Example0151

4