

Go to:<http://dev.sentilla.com>
and register!



© 2008 Sentilla Corporation
201 Marshall St., Redwood City, CA 94063
phone:650.241.0220 email:info@sentilla.com

Version 2008 SQSB.1



Perk

Pervasive Computing Kit



Quick Start

Step 1 Setup the Motes



Step 2 Install Software



Step 3 Insert Gateway



Step 4 Install Drivers

Located on Software CD
U:\ USB Serial Drivers

4



Step 5 Launch Sentilla

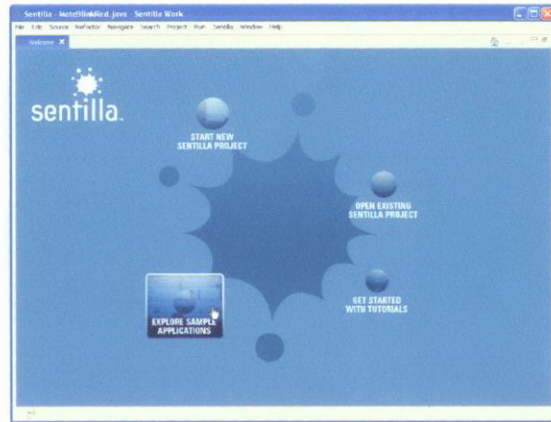


Sentilla Work

Click Desktop Shortcut

5

Step 6 Get Started!



6

Develop and Run Apps.

Click **Run Mote Application** from the Sentilla menu